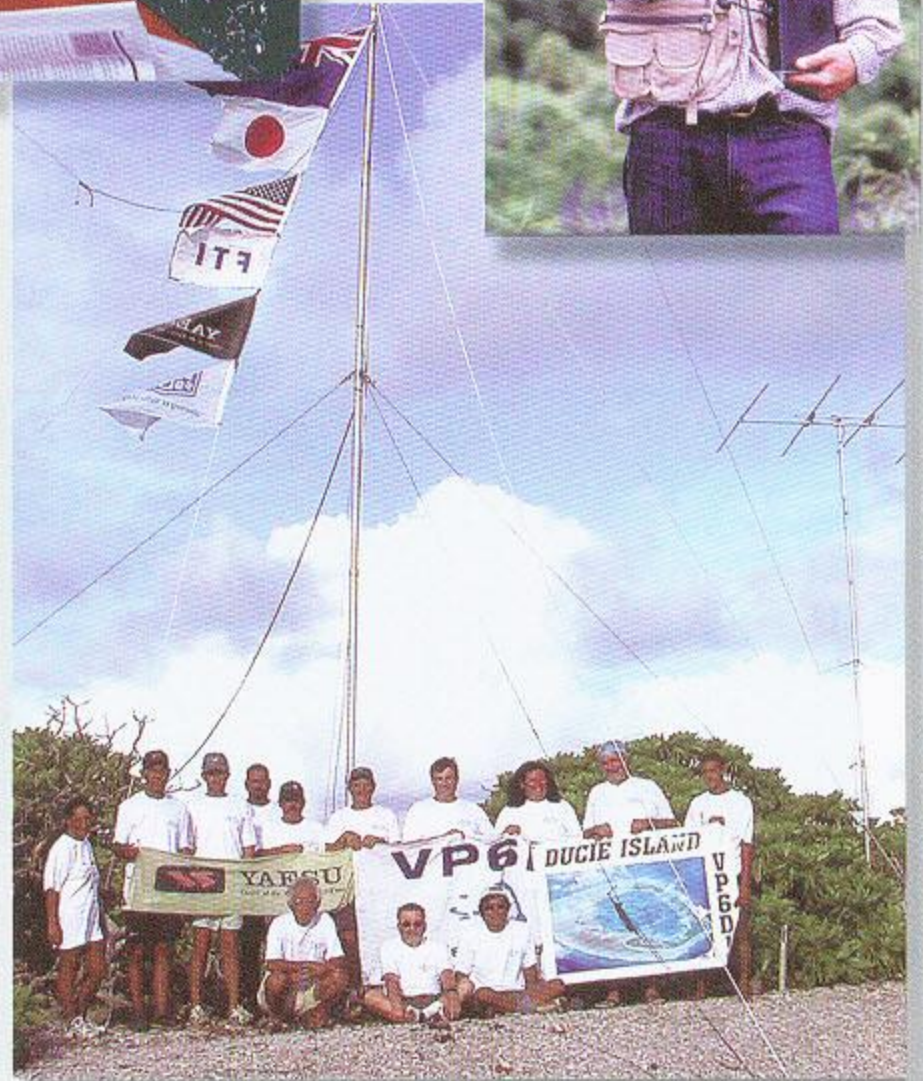
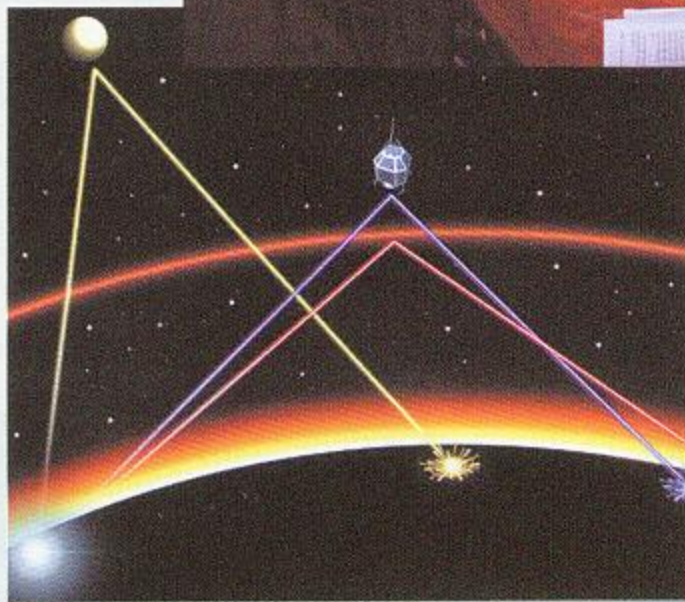
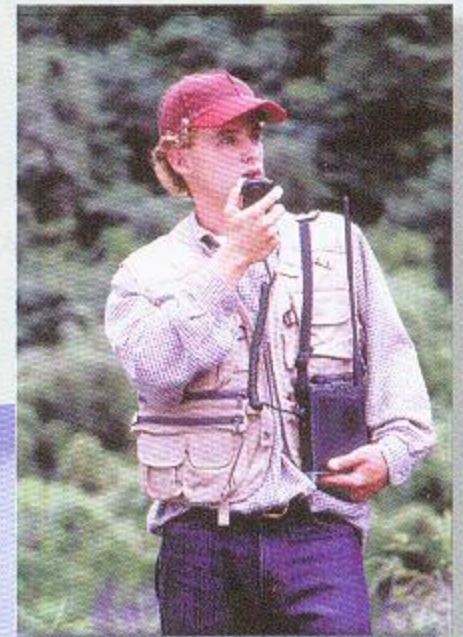
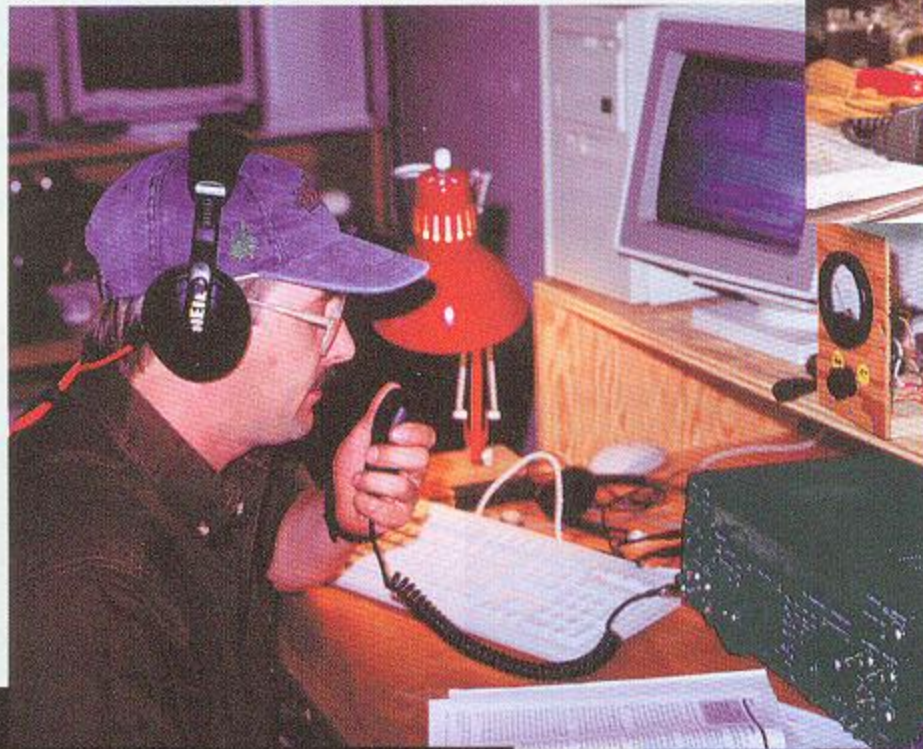


2002 CATALOG

AMATEUR RADIO EQUIPMENT



 **YAESU**
Choice of the World's top DX'ersSM

Choice of the World's top DX'ers



MARK-V FT-1000MP 200 W HF All-Mode Transceiver

The MARK-V FT-1000MP represents the crowning achievement in Yaesu's HF transceiver design history. A unique blend of analog and digital technology, the MARK-V is based on the concept of rigorous filtering in all stages of the receiver and transmitter.

The MARK-V introduces five all-new features to the FT-1000 Series : (1) IDBT(Interlocked Digital Bandwidth Tracking), which matches the receiver passbands of the 8.2 MHz IF, 455 kHz IF, and DSP systems, for "brick-wall" selectivity; (2) the VRF (Variable RF Front-end Filter), providing a high-Q "Preselector" system protecting the receiver's front end; (3) Class-A PA Operation, providing extraordinary SSB signal purity; (4) 200-Watt MOSFET Final Amplifier, giving you that extra drive for your linear; and (5) Integrated Shuttle Jog Control, combining the access buttons for IDBT and VRF with the convenient frequency control of Yaesu's exclusive Shuttle Jog. With high power output, superb ergonomics, and Yaesu's unique know-how in designing elite-class HF equipment, the MARK-V FT-1000MP will be utilized by DX and contest champions for years to come.

This is a serious radio, for those who need real filtering, not just a silicon chip in a box!

MARK-V FT-1000MP SERIES

FTV-1000 200 W 50MHz Transverter

The MARK-V "Magic Band" Evolution... The FTV-1000 200-Watt 50 MHz High-Performance Transverter!



Features

- 50 MHz Transverter with 200 W PEP Power Output
- Class-A Bias Selection for Low TX IMD (PO: 50 W)
- High-Performance Receiver Front End
- Automatic, Effortless Operation with MARK-V FT-1000MP
- Upgrade to High Power with VL-1000 Linear Amplifier

The Best of the Best



FT-1000D 200 W HF All-Mode Transceiver

Judged "best overall" by top DX'ers worldwide, the FT-1000D delivers optimum receiver performance and real "muscle" on transmit. With a front panel featuring two flywheel-weighted tuning knobs and two large displays, it's a perfect blend of ergonomics and electronics. Hear signals you've never heard before.

Features

- Frequency coverage:
 - RX : 100 kHz-30 MHz
 - TX : 160-10 m Amateur Bands
- RF Output Power Up to 200 Watts
- True Cross-band Dual Receive with Two Large Tuning Knobs
- Front Panel RX Antenna Switch for Beverage or Loop
- Built-in Antenna Tuner w/32 Memories
- Direct Digital Synthesis (DDS)
- 100 Memory Channels Store Frequency, Mode, and Filter Selection
- CW Spot and Two CW Key Jacks for Maximum Convenience
- Dynamic Range : 108 dB
- Optional Digital Voice Recorder (DVS-2): 16 Sec. each RX/TX

Features

- Frequency coverage:
 - RX: 100 kHz - 30 MHz
 - TX: 160-10 m Amateur Bands
- 200 Watts Power Output (Class A: 75 Watts) (Phillips BLF147 MOSFET PA transistors)
- Class A Operation: Improves TX IMD by 20 dB or more compared to other designs!
- Dual in-band Receive w/Separate "S" Meters
- Ten Pole Collins® Mechanical Filter Built-in
- RX DSP Noise Reduction and CW Peaking Filter
- High-speed Automatic Antenna Tuner
- Two TX/RX Antenna Jacks plus RX-only jack
- TX Microphone Equalizer
- RF Speech Processor
- Direct Digital Synthesis (DDS)
- CW Spot and Two Key Jacks
- Two Headphone Jacks (1/4" and 3.5 mm)
- Low-Level Transverter RF Drive Jack
- Separate FP-29 Power Supply (30V DC output)

QUADRA SYSTEM

VL-1000/VP-1000 1 kW HF/50 MHz Linear Amplifier

For a bold, clean signal from "Top Band" through the "Magic Band," the VL-1000/VP-1000 QUADRA SYSTEM belongs in your station! Providing 1000 Watts of power output on 160 through 6 meters, the VL-1000 and its matching VP-1000 Power Supply are today's high-tech way to generate a big signal on the bands!

Features

- Frequency range: 160-6 meters (160-15, 6 meters in USA)
- 1 kW power output (6 m: 500 W/USA version)
- Four twin-MOSFET PA modules
- Dot-matrix multi-function LCD
- Two input and four output jacks for easy connection to station antennas
- Built-in Automatic Antenna Tuner
- Panoramic SWR display shows "before tuning" and "after tuning" SWR data across a band
- Matching VP-1000 Power Supply provides 48 Volts DC at 48 Amps



MARK-V FT-1000MP Field 100 W HF All-Mode Transceiver

The world's top DX and Contest operators have lauded the leading-edge performance of the MARK-V FT-1000MP. Now you can experience the Mark-V for yourself in the exciting new MARK-V Field, a 100-Watt all-in one HF transceiver with built-in power supply! With all the great features of the MARK-V: the Integrated Digital Bandwidth Tracking, Variable RF Preselector, Class-A SSB transmission, and bullet-proof front end... you'll have all the tools to come out on top in the next pile-up. The MARK-V Field. From the Yaesu DX Professionals.

Features

- Frequency Coverage:
 - RX: 100 kHz - 30 MHz
 - TX: 160-10 m Amateur Bands
- 100 W Power Output (Class A: 25 W)
- AC and DC Operation Built In
- Dual In-band Receive
- High-Speed Automatic Antenna Tuner
- Enhanced Digital Signal Processing
- RF Speech Processor
- TX Microphone Equalizer
- Ten-Pole Collins® Mechanical Filter
- Two Antenna Jacks + RX-only Jack
- CW Spot and Two Key Jacks
- Direct Digital Synthesis



FT-920 HF/50 MHz Transceiver

The FT-920 brings industry-leading Digital Signal Processing, 160-6 meter coverage, and outstanding ergonomics to today's active ham. A wealth of built-in features and outstanding receiver performance help you log those tough DX contacts.

Features

- Frequency coverage:
 - RX : 100 kHz-30 MHz
 - TX : 160-6 m Amateur Bands
- High-speed (33 million instructions per second) DSP in all modes
- HF + 50 MHz with 100 Watts Output
- New Design MOSFET PA Finals
- Built-in High Speed Auto Antenna Tuner includes 50 MHz (ATU works on both RX & TX)
- Built-in Digital Voice Recorder
- Built-in Electronic Memory Keyer
- CW SPOT & PITCH Controls
- User-friendly DSP Bandwidth Controls
- DSP Speech Processor
- DSP Auto-Notch Filter and Noise Reduction
- AFSK or FSK Digital Mode Operation
- Simplified Tuning with Shuttle-Jog™ Control
- Omni-Glow™ LCD with Twin Frequency Displays
- Independent RX Preamps for High & Low Bands
- 127 Memories for Operating Convenience
- Quick Memory Bank (QMB) Instant Memory System
- Front Panel RX Antenna Selector Switch



FT-840 Compact HF Transceiver

The FT-840 features the design excellence borrowed from the FT-1000 Series, at an incredibly low price that won't break your budget. With its bright LCD, quiet receiver, and no-nonsense ergonomics, the FT-840 is a perfect companion at home or away.

Features

- Frequency coverage:
 - RX : 100 kHz-30 MHz
 - TX : 160-10 m Amateur Bands
- Direct Digital Synthesis (DDS)
- IF Shift
- 100 Memory Channels (Independent TX/RX per memory)
- Two VFOs
- Optional FM Unit
- Automatic 10-Meter Repeater Offset w/Selectable CTCSS Encode
- CW Reverse Feature
- AF Speech Processor
- Metering of Power Output and ALC
- IF Noise Blanker
- Choice of Two Optional Antenna Tuners: FC-10 Matching External Antenna Tuner FC-800 External Remote Antenna Tuner



(USA only)

FT-600 Compact HF Transceiver

The FT-600 combines the straightforward, practical layout of a commercial radio with the most-often-used features on the front panel.

The simplicity of the front panel design includes two Up/Down buttons for frequency, memory, and band stepping, while four knobs control Clarifier, Volume, Squelch, and Tuning. Popular features include Direct Frequency Entry Keypad for quick QSY. 100 Watts Power Output - the benchmark for amateur HF operation.

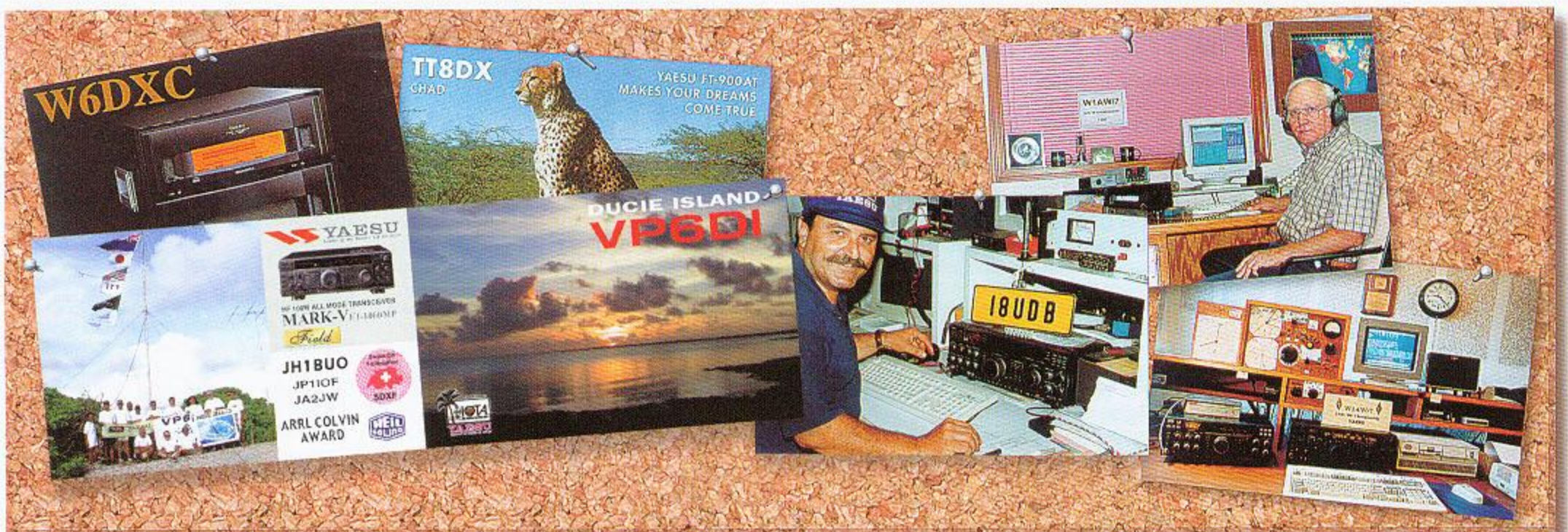
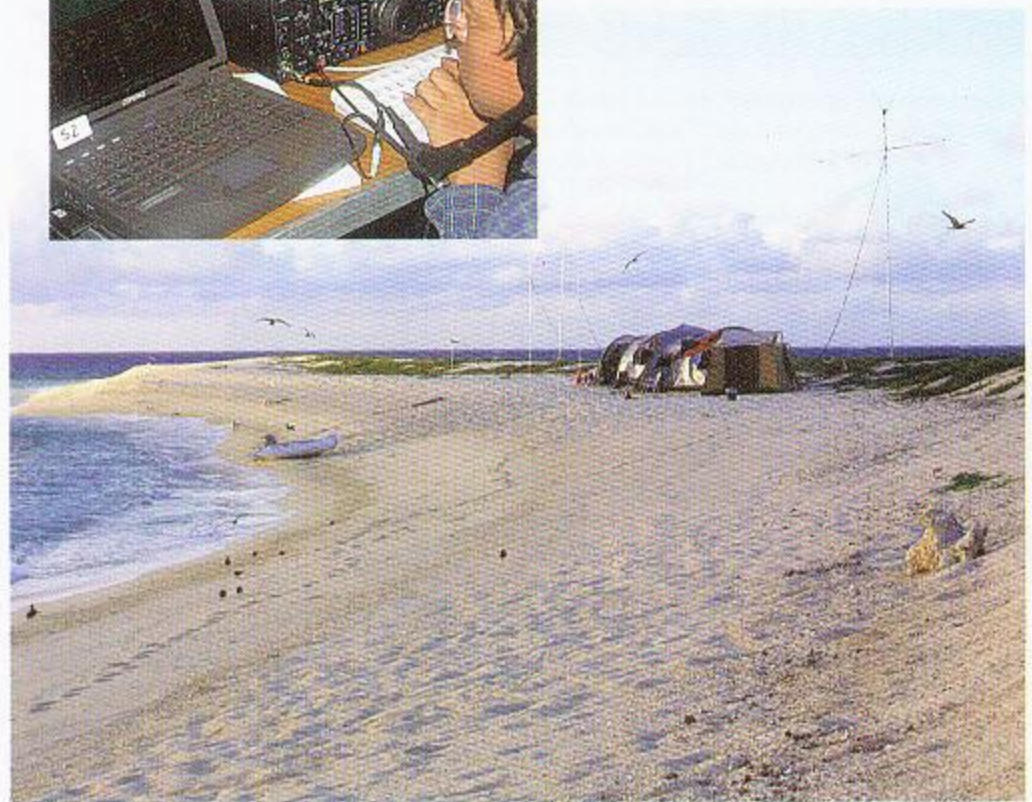
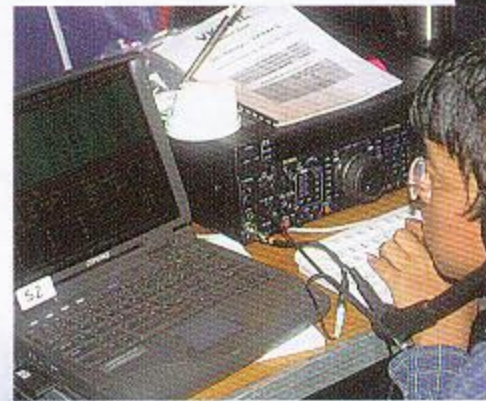
And, MIL-STD 810 - to meet rugged commercial-grade construction standards.

Features

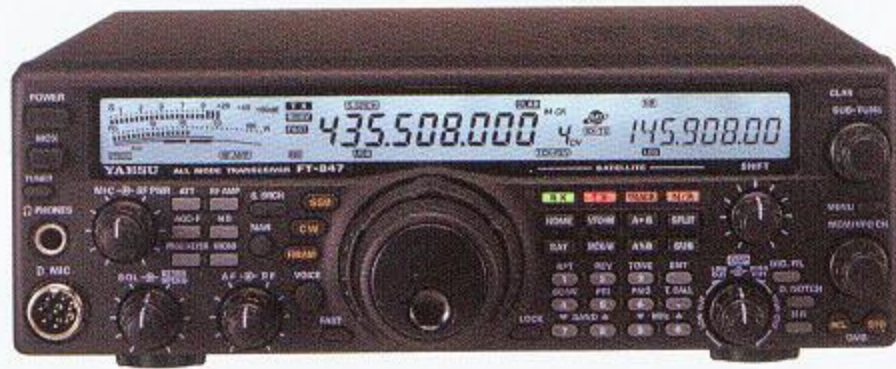
- Frequency Coverage
 - RX : 50 kHz-30 MHz
 - TX : 160-10 m Amateur Bands Only
- Direct Digital Synthesis (DDS)
- 100 Memory Channels (in 4 banks of 25)
- Direct Keypad Frequency Entry
- Alpha-Numeric Display
- Front Mounted Speaker w/High Audio Output
- MIL-STD 810 Rating
- Dual Watch
- Selectable Noise Blanker
- Omni-Glow™ Display



VK9ML (April, 2002)



EARTH STATION



FT-847

Multi-Mode HF/VHF/UHF Satellite Transceiver

Utilizing the latest computer-aided design techniques, Yaesu's engineers have achieved an engineering breakthrough in the FT-847 Earth Station: a full-power transceiver covering the HF, 50 MHz, 144 MHz, and 430 MHz bands in a package about 2/3 the size of a briefcase! The FT-847 includes Full Duplex satellite operation, DSP receiver filters, and exceptional receiver performance for today's crowded bands.

Features

- Frequency coverage:
 - RX: 100 kHz-37 MHz, 37-76 MHz, 108-174 MHz, 420-512 MHz
 - TX: 160-6 meters/2 meters/70 centimeters 4 meters (UK version) 5.1675 MHz (Alaska Emergency Channel, USA version)
- Power Output: 100 W (160-6 m), 50 W (144/430 MHz), 10W (4 m)
- Full Cross-band Duplex Satellite Mode with Normal/Inverted Tracking
- DSP Bandpass, Notch, and Noise Reduction Filters
- Four antenna jacks (HF/50/144/430) for easy interconnections
- Low-noise preamplifiers (HEMT on 430 MHz) and wide dynamic range
- Bright LCD with dual frequency display
- Main and Sub VFO Tuning Dials for Satellite Doppler Correction
- Built-in CW Electronic Keyer
- Shuttle-Jog™ Tuning Dial
- IF Shift
- Rear panel AFSK connections for 300/1200/9600 bps packet, RTTY, etc.
- Optional Collins® Mechanical Filters in 2.5 kHz or 500 Hz bandwidths
- Keyboard frequency entry
- Automatic Repeater Shift, Cross-band Repeat, and FM Wide/Narrow features
- Built-in CTCSS and DCS for FM operation
- Discriminator Center Meter
- High-speed (57k6 bps) RS-232C port for external control
- Optional FC-20 External Antenna Tuner
- Compatible with ATAS-100 Active-Tuning Antenna System
- Optional FVS-1A Voice Frequency Announcement module



FT-897

High Performance ALL IN ONE Portable Base Transceiver

The FT-897 is the world's first multimode high-power base/mobile transceiver designed to be fitted with batteries for portable use! With coverage of 160-10 meters, plus the 50/144/430 MHz bands, the FT-897 is ideal for home, vacation, emergency/rescue, DX-pedition, or VHF/UHF "Rover" operation!

Features

- Frequency Coverage:
 - RX: 100 kHz-56 MHz 76 MHz-108 MHz (WFM only) 118 MHz-164 MHz 420-470 MHz
 - TX: 160 - 6 m, 2m, 70 cm Amateur Bands 5.1675 MHz (Alaska Emg. Freq., US Only)
- SSB/CW/AM/FM/FM-W/Digital Modes
- 100 Watts Power Output (HF/6 m); 50 W (2 m); 20 W (70 cm)
- Optional Internal Batteries: 4800 mAh x 2 (Power Output: 20 W)
- Built-in Digital Signal Processing
- Built-in 3-Message Memory Keyer
- Built-in VOX
- Built-in AF Speech Processor
- Automatic Beacon Mode for Expedition Use
- IF Shift
- IF Noise Blanker
- Spectrum Scope
- Clarifier ("R.I.T.")
- U.S. Weather Band Reception
- AM and FM Broadcast Reception
- AM Aircraft Reception
- Transverter Interface Jack
- AGC Fast/Slow/Auto/Off Selection
- 200 Memories plus HOME and Band-Limit Memories
- Alpha-Numeric Labeling of Memories
- Multi-Color Dot-Matrix Display
- Compatible with ATAS-Series Auto-Tune Antennas
- Built-in CTCSS and DCS Encoder/Decoders
- ARTS™ Auto-Range Transponder System
- Smart Search™ Automatic Memory Loading System
- CW Training Feature
- Optional 2.3 kHz and 500 Hz IF Filters
- Optional High Stability TCXO-9 (±0.5 ppm)
- Optional Internal FP-30 Power Supply
- Optional FC-30 Automatic Antenna Tuner
- Computer Interface Capability
- Cloning Capability
- Strong Carrying Handle

MICRO MOBILE SERIES



FT-100D

Ultra-Compact HF/VHF/UHF Transceiver

The FT-100D is a high-performance, ultra-compact transceiver operating on the 160-10 meter HF bands, plus the 50, 144, and 430 MHz VHF/UHF bands. Known for its outstanding receiver performance, the FT-100D's easy-to-access DSP system is the cornerstone of the leading-edge receiver design. Providing Noise Reduction, Auto-Notch, and Narrow-Bandwidth Filter capability, the DSP system also includes a Microphone Equalizer for the transmit side.

The new and enlarged speaker of the FT-100D (2.6"/66 mm dia.) provides spectacularly clean audio output, to help you dig out those weak signals. Whether at home or away, the fantastic new FT-100D is The Choice of the World's Top DX-ers. Step up to the FT-100D, and enjoy the thrill of the sunspot peak in style!

Features

- Frequency coverage:
 - RX: 100 kHz-30 MHz, 30-970 MHz (Cellular/digital tel. frequencies are blocked)
 - TX: 160-6 m/144-148 MHz/430-450 MHz
- Power output: 100 W (160-6 m), 50 W (144 MHz), 20 W (430 MHz)
- DSP Bandpass Filter, Notch Filter, Noise Reduction, and Equalizer
- IF Noise Blanker
- IF Shift
- SSB, CW, AM, FM, AFSK, Packet (1200/9600 bps) operation
- Two Antenna Jacks (HF/50 and 144/430)
- VOX
- Dual VFOs
- Available IF bandwidths of 6 kHz, 2.4 kHz, 500 Hz, and 300 Hz (6 kHz or 300 Hz filters optional)
- Built-in Electronic Memory Keyer
- Speech Processor
- Enhanced Internal Speaker Audio
- Built-in CTCSS and DCS Encoder/Decoders
- Automatic Repeater Shift and Auto-Range Transponder System
- Smart Search™ Automatic Memory Channel Loading System
- 300 Memory Channels
- Quick Memory Bank (QMB)
- Built-in TCXO-8 High-Stability Oscillator for digital operation
- Optional FC-20 External Antenna Tuner
- Compatible with ATAS-100 Active-Tuning Antenna System



FT-817

All Mode Portable Transceiver

The world's first self-contained, battery-powered, Multimode Portable Transceiver covering the HF, VHF, and UHF bands! Breaking new ground in miniaturization, the FT-817 provides up to five watts of output, and it's ready for action on SSB, CW, AM, FM, Packet, RTTY, and PSK31! Make the FT-817 the cornerstone of your next hiking, camping, or search-and-rescue adventure!

Features

- Frequency Coverage:
 - RX: 100 kHz - 30 MHz, 50 - 54 MHz 76 - 108 MHz (W-FM only) 108 - 154 MHz (USA) 144-148 (146) MHz (other markets) 430 (420) - 450 (440) MHz
 - TX: 160 - 6 Meters, 2 Meters 70 Centimeters (Amateur Bands only) 5.1675 MHz (Alaska Emergency Frequency; USA only)
- Ultra Compact: 5.3" x 1.5" x 6.5" WHD (135 x 38 x 165 mm)
- Multimode Design: SSB, CW, AM, FM, FM-Wide (RX), 1200/9600 bps Packet, Digital (including PSK-31U/PSK-31L)
- Power Output: 5 Watts (selection of 0.5/1.0/2.5/5 W)
- Wide choice of power sources: AA Battery Holder included; optional FNB-72 Ni-Cd Battery Pack (9.6 V, 1000 mAh); external DC cable included for 13.8 V operation
- Two Antenna Ports: BNC on front panel, UHF (Type "M") on rear panel; may be assigned via Menu on HF, 50, 144, 430 MHz
- Built-in CW Electronic Keyer, Normal/Reverse Paddle connections, adjustable CW Pitch, Normal/Reverse sideband
- Built-in CTCSS and DCS Encoder/Decoder circuits
- 208 Memory Channels, including 200 "regular" memories, assignable in up to ten memory groups; Alpha-Numeric label may be attached to each memory
- Dual-Color Liquid Crystal Display: choice of Blue or Amber display
- Spectrum Scope records five channels above and below current frequency while you're away
- Optional Collins® Mechanical Filters: 10-pole YF-122S (2.3 kHz) for SSB, 7-pole YF-122C (500 Hz) for CW

European and Asian versions



FT-8900R

29/50/144/430 MHz Quad Band FM Mobile

The FT-8900R is a ruggedly-built, high quality Quad Band FM transceiver providing 50 Watts of power output on the 29/144 MHz Amateur bands, 35 Watts on the 50/430 MHz Amateur band. It includes leading-edge features like cross-band repeat, dual receive, VHF-UHF Full Duplex capability, and over 800 memory channels. And its 10-meter FM coverage brings the possibility of world-wide FM DX-ing to you on your drive in to work!

Features

- 29/50/144/430 MHz FM Quad Bander
- V+U/V+V/U+U Dual Band Reception
- V+U Full Duplex Operation
- Cross-Band Repeater Operation
- Independent Dial for Each Band
- Heavy-Duty Construction
- Remote-Head Mounting Capability
- High-Power 50 W (50/430 MHz: 35 W) and Heavy-Duty PA Design
- User-Programmable Microphone Keys
- Huge Illuminated Display
- 50-Tone CTCSS/104-Code DCS Tone Systems
- ARTS™ (Auto-Range Transponder System)
- Smart Search™ (Automatic Memory Loading System)
- Hyper Memory (Store and recall a complete set of transceiver configuration data)
- Huge 800-Channel Memory Capacity
- Versatile Scanning Selections
- RF Squelch
- Internet Key for Instant Access to WIRES™ (Wide-coverage Internet Repeater Enhancement System)
- 1200/9600 bps Packet Operation

European and Asian versions



FT-7100M

2 m / 70 cm FM Dual Band FM Mobile

The exciting new FT-7100M Dual Band Mobile brings you the ruggedness and operating ease of our single-band mobiles, along with the convenience of remote-head mounting capability (optional YSK-7100 Separation Kit required). Providing 50 Watts of power output on 2 meters, and 35 Watts on 70 cm, the FT-7100M features straightforward operation, built-in CTCSS and DCS encode/decoder circuits, and the ruggedness you've come to expect from a Yaesu Dual-Bander!

MICRO MOBILE SERIES

European and Asian versions



FT-90R

50 W 2 m / 70 cm Dual Band FM Mobile

Yaesu's mechanical and metallurgical engineers have achieved a technological breakthrough in the development of the FT-90R, providing 50 Watts of 144 MHz power output (430 MHz: 35 W) from a package measuring just 3.8" x 1.2" x 5.4" (100 x 30 x 138 mm), and weighing just 1.42 lb. (644 g). The FT-90R's diecast aluminum chassis doubles as the heat sink for the M67781L (144 MHz) and M57788MR (430 MHz) power modules, with a microprocessor-controlled cooling fan providing extra ventilation when needed. The result is a high-power dual-band transceiver with high reliability... that can fit into your coat pocket!

Features

- Frequency coverage:
 - RX : 100-230 MHz, 300-530 MHz, 810-999.975 MHz (Cellular Blocked)
 - TX : 144-146 MHz or 144-148 MHz (2 m), 430-440 MHz or 430-450 MHz (70 cm)
- 50 Watts Power Output (430 MHz: 35 W)
- Ultra Compact: 3.9" x 1.2" x 5.4" WHD (100 x 30 x 138 mm)
- AM Aircraft Receive
- Selectable TX Power: 2 m : 50/20/10/5 W, 70 cm : 35/20/10/5 W
- Programmable VFO Steps: 5/10/12.5/15/20/25/50 kHz per Step
- Built-In CTCSS/DCS Encoder/Decoders
- 188 Memories with 7-Character Alpha/Numeric Labels
- Direct Keypad Frequency Entry via MH-36A6J DTMF Microphone
- Smart Search™ Automatic Memory Loading
- Programmable Front Panel/Microphone Key Functions
- Battery Voltage Meter
- Auto-Range Transponder System (ARTS™)
- TX Time-Out Timer (TOT)
- Automatic Power-Off Battery Saver (APO)
- Remote-Head Operation using Optional YSK-90 Separation Kit
- 16-Digit 8-Memory DTMF Autodialer (requires MH-36A6J Mic)
- ADMS-2E Windows™ PC Programmable
- Automatic Repeater Shift
- 1200/9600 bps Packet Compatible
- RF-Level Squelch for Quiet Monitoring of Busy Channels
- DCS Code # Search
- Versatile Scanning Features
- Priority Channel Monitoring
- Menu for Feature Customization
- Adjustable Display Brightness and Contrast
- Aluminum Diecast Chassis with Cooling Fan

European and Asian versions



FT-3000M 70 W High Powered 2-m FM Mobile

The FT-3000M is the only amateur 2-meter FM mobile transceiver with 70 watts of output power. Built to rugged MIL-STD specifications, the FT-3000M's receiver is also a tough competitor in today's difficult RF environment. Innovative features and superb human engineering make the FT-3000M an industry leader in performance and operating ease.

Features

- Frequency coverage:
 - RX : 110-180 MHz, 300-520 MHz, 800-999 MHz*
 - TX : 144-148 MHz
- AM Aircraft Receive
- MIL-STD 810 Rating
- Interactive Programming Menu
- High Power Output: 70/50/25/10 Watts
- Quick-Touch™ Dual Concentric Control Knob
- Twin Cooling Fans
- ADMS-2D Windows™ Programmable
- Digital Coded Squelch (DCS)
- 81 Memory Channels
- Auto Range Transpond System (ARTS™)
- 1200/9600 Baud Packet Compatible
- Smart-Search™
- Alpha-Numeric Display
- Dual Watch
- * Cellular blocked.

European and Asian versions



FT-2600M 60 W 2-m FM Mobile

Yaesu's FT-2600M, the most ruggedly-built 2-meter amateur transceiver ever, provides 60 Watts of power along with Yaesu's renowned "bullet-proof" receiver front end. Direct keypad frequency entry, Alpha-Numeric Memory System, the high-output, front-mounted speaker, and unsurpassed ergonomics make the FT-2600M an operator's dream come true!

Features

- Frequency coverage:
 - RX : 134-174 MHz
 - TX : 144-148 MHz
- 60 Watts Power Output
- Selectable TX Power: 60/25/10/5 W
- Direct Keypad Frequency Entry via MH-36B6J DTMF Microphone
- 1200/9600 bps Packet with easy interface via a dedicated rear-panel jack
- 175 Memories with 8-character Alpha-Numeric labels
- Built-In CTCSS/DCS Encoder/Decoders
- Smart Search™ Automatic Memory Loading
- Omni-Glow™ multi-function LCD display
- Auto-Range Transponder System (ARTS™)
- Extensive Menu system
- TX Time-Out Timer (TOT)
- Automatic Power-Off Battery Saver (APO)
- Automatic Repeater Shift (ARS)
- S-Meter RF Squelch
- ADMS-2E Windows™ PC Programmable
- Supply Voltage Display
- Front-mounted Speaker
- TX Half-Deviation setting



FT-1500M 50 W 2-m FM Mobile

For demanding VHF FM operating environments, Yaesu's new FT-1500M is rugged inside and out. Sporting a modernistic front panel and case design with pop-up control keys, the FT-1500M is designed for wide receiver dynamic range, to fight intermod in crowded urban RF-pollution areas. And the unique "Weather Search" feature will automatically scan through the separate Weather Band channels, searching for the loudest station in your area. Whether at home or away, the FT-1500M keeps you in touch!

Features

- Frequency Range:
 - 144-145.995 or 137-174 MHz (RX)
 - 144-145.995 or 144-148 MHz (TX)
- Power Output: 50/25/10/5 Watts
- 130 Memory Channels with 6-character Alpha-Numeric labels.
- Direct Keypad Frequency Entry from Microphone
- Dimensions (WHD): 5" x 1.4" x 4.9" (127 x 35 x 126 mm)
- Weight: 2.2 lb. (1 kg)
- 10 Weather Band Channels with Auto-Search
- Selectable Channel Steps: 5/10/12.5/15/20/25/50/100 kHz/Step
- CTCSS Encode/Decode with 50 Tones and Tone Scan
- Automatic Repeater Shift (ARS)
- Smart Search™ Automatic Memory Loading
- Programmable Microphone Key Functions
- Excellent Image and IF Rejection (>70 dB)
- Diecast Aluminum Chassis
- ADMS-2F Windows™ PC Programmable
- Battery voltage Display
- RF-Level Squelch/Noise Squelch
- 16-Digit 8-Memory DTMF Autodialer
- Wide/Narrow Bandwidth Selection
- Auto Power-Off and Time-Out Timer Power Savers
- 1200/9600 bps Packet Compatible
- Cloning Capability to Other FT-1500M Transceivers

VHF+UHF Mobile Transceivers



VX-7R

5 W Ultra-Rugged, Submersible Tri-Band Magnesium Handheld

Own the brightest star in the Ham Radio Galaxy! The exciting new YAESU VX-7R sets new standards in ruggedness, water resistance, and versatility, and its memory capacity is unparalleled. Own the VX-7R, and you'll own the best.

Features

- Frequency Coverage: RX: 0.5 - 999 MHz (Cellular blocked) TX: 50, 144, 430 MHz Amateur Bands 222 MHz Band (U.S. version)
- True Dual Receive: V-V-U-U/V-GEN-HAM
- Power Output: 5 Watts (222 MHz: 300 mW) 6 m AM: 1 W
- AM Shortwave and Broadcast RX
- Weather Broadcast Memory Bank with "Severe Weather" Alert
- Over 500 Memory Channels
- Shortwave Broadcast Memory Bank
- Marine Band Memory Bank
- 10 "Hyper" Memories to Store Transceiver Configuration
- Submersible: 30 minutes @ 3 feet
- Rugged Magnesium Case
- 1300 mAh Lithium-Ion Battery Supplied
- CTCSS and DCS Encoder/Decoder Circuits Built In; Split Tone mode available
- ARTS™ Auto-Range Transponder System
- Internet Key for Access to WIRES™ Repeater-Internet Linking System
- Dazzling 132 x 32 Dot Matrix Display
- Full Color Strobe LED with Color Editing
- 24 Hour Clock with On/Off Timers
- Wide Selection of Icons, or Create Your Own
- Audio Wave Meter
- Spectrum Scope Display
- RX and TX Battery Savers and Illumination Control
- "Quick-Draw" Swivel-Mount Belt Clip
- Emergency Strobe/Beep Feature
- 16-Digit, 9-Memory DTMF Autodialer
- Automatic Repeater Shift (ARS)
- Cloning Capability to other VX-7Rs
- Optional SU-1 Barometric Pressure Unit with Weather Forecast Feature
- Rubber Case Protection Bumpers



FT-50R

5 W Heavy Duty Dual Band Handheld

For the foremost in top-performing, durable, dual band handhelds there is one choice. The FT-50R. Manufactured to rigid commercial grade standards, the FT-50R was the first amateur dual band HT to achieve a MIL-STD 810 rating. Water-resistant construction uses weather-proof gaskets to seal major internal components against the corrosive action of dust and moisture. And, the rugged FT-50R withstands shock and vibration, so throw it in with your gear!

Features

- Frequency coverage: RX : 76-200 MHz, 300-540 MHz, 590-999 MHz (cellular blocked) TX : 144-148 MHz, 430-450 MHz
- AM Aircraft Receive
- MIL-STD 810 Rating
- Digital Coded Squelch (DCS)
- 112 Memory Channels
- 12V DC Direct Input
- High Speed Scanning
- Alpha-Numeric Display
- CTCSS Encode (Decode w/FTT-12)
- Auto Range Transpond System™ (ARTS™)
- Dual Watch
- Direct FM
- High Audio Output
- ADMS-1E Windows™ Programmable
- Four Battery Savers: Automatic Power-Off (APO), Receive Battery Saver (RBS), Selectable Power Output (SPO), Transmit Battery Saver (TBS)
- Time Out Timer (TOT)
- 2.5 and 5 Watt Versions Available
- Optional Digital Voice Recording System (DVRS)



VX-5R/VX-5RS

5 W Heavy Duty Triple Band Handheld

The VX-5R's ruggedness and durability are assured thanks to the die-cast aluminum housing, augmented by an extensive gasketing system which sets a new standard for water resistance among amateur HTs. Tough enough to have passed the stringent shock and vibration requirements of the U.S. military (MIL-STD 810), the VX-5R also boasts such signature Yaesu features as loud, crisp receiver audio, a large easy-to-read LCD display, and straightforward operation. The VX-5R is the unquestioned leader in HT technology now and in the new Millennium!

Features

- Frequency coverage: RX : 0.5-15.995 MHz 48-728.990 MHz 800-998.990 MHz (Cellular Blocked) TX : 50-54 MHz 144-148 MHz 430-450 MHz
- 5 W Power Output (430 MHz: 4.5 W)
- AM/Shortwave and Aircraft Receive
- Aluminum Diecast Case
- High-Capacity Lithium-Ion Battery: 7.2 V @ 1100 mAh!
- CTCSS and DCS Built In
- Optional Barometric Sensor Unit
- Spectra-Scope™ Graphical Display
- 220 Memories plus "Home"Channels
- Ten Pairs of "Band Limit" Memories
- Ten Auto-Scan Weather Channels (North American version)
- 8-Digit Alphanumeric Memory Tags
- Smart Search™ Automatic Memory Loading
- Auto-Range Transponder System (ARTS™)
- One-Touch Emergency Channel
- Innovative Multi-Section Antenna



VX-150

5 W Full Featured 2m FM Handheld

Compact yet incredibly rugged, the VX-150 2-meter handheld is designed to perform under the most difficult operating conditions, and it's packed with the leading-edge features you've come to expect from a Yaesu product. The VX-150's die-cast aluminum case houses a large, high-output speaker, and the illuminated keypad provides easy viewing during nighttime operation.

Features

- Frequency coverage: RX :140 -174 MHz TX :144 -148 MHz
- 5 Watts Power Output
- 209 Memories
- Direct Keypad Frequency Entry
- 7-Digit Alphanumeric Memory Labels
- Omni-Glow™ Display Illumination
- Two User-Definable Keypad Function Keys
- Automatic Repeater Shift (ARS)
- 9 DTMF Auto-Dial Memories (16 digits each)
- ARTS™ (Auto-Range Transponder System)
- Wide/Narrow Deviation Selection
- TX and RX Battery Savers
- Time-Out Timer (TOT)
- Smart Search™ Auto Memory Loading
- Automatic Power-Off (APO)
- MIL-STD 810D/E
- 1750 Hz Tone Calling for European Repeaters
- Busy Channel TX Lock-Out (BCLO)
- Battery Voltage Meter
- ADMS-1F PC Programmable



VX-1R 500 mW/1 W* Ultra Compact Dual Band Handheld

The world has never seen a dual-band amateur hand-held transceiver with such small size combined with ultra-wide frequency coverage. Until now. Sporting dimensions of 3.2" x 1.9" x 1" (81 x 47 x 25 mm) WHD, the VX-1R provides superb local communications at a power level of 500 mW to 1 Watt*, while including impressive memory and scanning capabilities. The wideband receiver coverage includes VHF and UHF TV audio, AM broadcast, FM broadcast, AM aircraft band, and public safety channels. The wide world of Dual Band performance has just gotten smaller. . .much smaller!

Features

- Frequency coverage: RX:76-999 MHz** TX:144-148, 430-450 MHz
- AM/FM/TV Broadcast Receive
- AM Aircraft/Public Safety Receive
- CTCSS Encode/Decode
- DCS Encode/Decode
- CTCSS/DCS Tone Search
- Dual Watch
- Smart Search™
- Auto Range Transpond System (ARTS™)
- Priority Channel Alarm
- ADMS-1E Windows™ Programmable
- 1 Watt Output (External Power Supply)
- Lithium Ion Battery included
- 80-Minute Rapid Charger included
- Internal Speaker included
- Flexible Antenna, Belt Clip, Hand Strap
- **Cellular blocked.



VX-110

5 W 2m FM Handheld

Combining the ruggedness of the VX-150 with the simplicity of 8-key operation, the VX-110 is a full-featured 2-meter hand-held ideal for the most demanding applications. With its die-cast case, large speaker, and illuminated keypad, the VX-110 is particularly well suited for public-safety operations, where ease of operation is critical. Rugged, reliable, and affordable, the VX-110 is ready for action whenever (and wherever) you are!

Features

- Frequency coverage: RX :140 -174 MHz TX :144 -148 MHz
- 5 Watts Power Output
- 209 Memories
- Simple 8-Key Operation
- 7-Digit Alphanumeric Memory Labels
- CTCSS and DCS Encode/Decode
- Omni-Glow™ Display Illumination
- 9 DTMF Auto-Dial Memories (16 digits each)
- Automatic Repeater Shift (ARS)
- ARTS™ (Auto-Range Transponder System)
- Wide/Narrow Deviation Selection
- TX and RX Battery Savers
- Time-Out Timer (TOT)
- Smart Search™ Auto Memory Loading
- Automatic Power-Off (APO)
- 1750 Hz Tone Calling for European Repeaters
- MIL-STD810D/E
- Busy Channel TX Lock-Out (BCLO)
- Battery Voltage Meter
- ADMS-1F PC Programmable



VR-120D

Wideband Receiver

Rugged and compact, the new Yaesu VR-120D Hand-Held Communications Receiver provides leading-edge performance on the shortwave, public safety, and military-communications bands. All at a surprisingly affordable price.

Features & Specifications

- Wideband Coverage: 0.1-1299.995* MHz AM/FM/Wide-FM
- Rugged outdoor-ready case construction
- Ultra-long battery life
- BNC-type antenna connector
- Straightforward 4-button operation
- Wideband frequency coverage with easy access
- Special "preset mode" aids in quick tuning
- Catch all the shortwave broadcast action from around the world
- Super-simple one-touch memories for high priority stations
- Versatile 640-channel memory system
- Wide selection of scanning modes
- Sensitivity:[100 kHz - 5 MHz] AM 1.5 μ V [5 MHz - 160 MHz] AM 0.6 μ V, FM 0.3 μ V, WFM 0.9 μ V [160 MHz - 370 MHz] AM 0.6 μ V, FM 0.3 μ V, WFM 0.6 μ V [370 MHz - 520 MHz] FM 0.3 μ V, WFM 1.0 μ V [520 MHz - 1300 MHz] FM 0.7 μ V, WFM 3.0 μ V
- External DC Input
- Optional FNB-79 Ni-Cd Battery Pack
- Optional NC-82/PA-30 Charging System

*Cellular / image / restricted frequencies. Blocked



VR-120
Wideband Receiver
Internal battery (only) Version

NEW EXTERNAL DC INPUT

Use either the PA-30B/C/U AC Adapter or E-DC-15 DC Cable to power your VR-120D.

AC Adapter
PA-30B/C/U*
(Optional)



DC Cable with
Cigar-Lighter Plug
E-DC-15 (Optional)

*B for 120 VAC/ C for 240 VAC/
U for 230 VAC.

OPTIONAL CHARGING STAND

Use the NC-82* Charger Stand and CA-34* Charger Sleeve to charge the optional FNB-79* Ni-Cd Battery Pack, using the PA-30* AC Adapter.



NC-82 CA-34

*Optional accessories

VR-500

All-Mode Wideband Receiver

Yaesu's years of hand-held transceiver design know-how bring you the ultra-compact VR-500 Receiver, measuring just 2.28" x .95" x 3.74" (58 x 24 x 95 mm) and weighing less than 1/2 lb. (220 g)! Take the VR-500 anywhere you go... and stay on top of the action!

Features & Specifications

- Frequency coverage : 100 kHz-1299.99995 MHz*
*Cellular and cellular-image frequencies are blocked.
- Modes : NFM,WFM,AM,USB,LSB,CW
- Multiple Power Source Capability
- Direct Keypad Frequency Entry
- Large High-Output Speaker
- Polycarbonate Case
- Real-Time 60-ch* Band Scope
*Range 6 MHz / Step 100kHz
- Full Illumination For Display And Keypad
- Convenient "Preset" Operating Mode
- Regular Memories(1000 channels)
- Search Band Memories(10 channels)
- 10 Preset Channel Memories plus 10 Weather Channels
- Dual Watch Memories : 10 channels)
- Priority Memory : 1 channel
- Smart Search Memories (41 maximum)
- Front-end 20 dB Attenuator
- RF Squelch
- Sensitivity (AM/CW/SSB:10 dB S/N, NFM/WFM:12 dB SINAD) : [100 kHz - 5 MHz] AM 1.5 μ V, CW/SSB 0.6 μ V, [5 MHz - 370 MHz] AM 1.0 μ V, CW 0.5 μ V, WFM 1.5 μ V, [5 MHz - 520 MHz] SSB/NFM 0.5 μ V, [370 MHz - 520 MHz] WFM 1.8 μ V, [520 MHz - 1300 MHz] SSB 0.8 μ V, NFM 1.2 μ V, WFM 3.0 μ V



VR-5000 All-Mode Wideband Receiver

The exciting world of communications monitoring, from LW to SW to Microwave, comes to your home or station with Yaesu's VR-5000 Communications Receiver. Professional features, professional ergonomics, and professional DSP-based selectivity are yours to enjoy today-and only from Yaesu!

Features

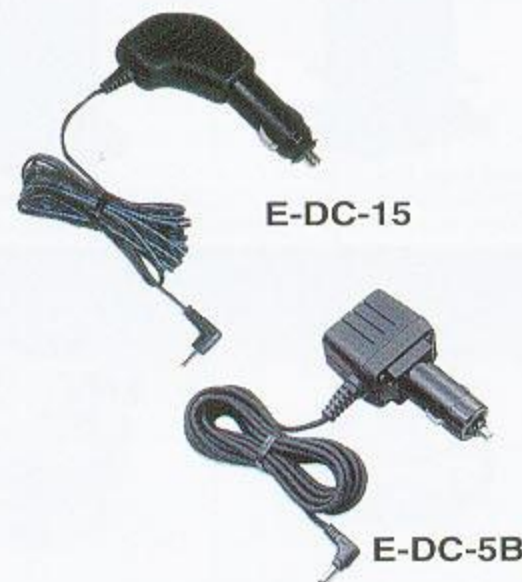
- Frequency Coverage : 100 kHz-2599.99998MHz**
- Modes : CW,LSB,USB,AM,AM-N,WAM,FM-N,WFM
- Real-Time Band Scope
- DSP Bandpass, Notch, and Noise Reduction Filters*
- 2000 Memory Channels
- World Clock
- Digital Voice Recorder (optional)
- Case Size : 7.1" x 2.8" x 8.0" WHD (180 x 70 x 203 mm)
- Weight (approx.) : 4.2 lb. (1.9 kg)

* Optional DSP-1 Unit required.

** Cellular and cellular-image frequencies are blocked.

Receiver Accessories

MODEL		VR-120D	VR-120	VR-500	VR-5000
ADMS-3	Windows™ PC Programming Software			•	
DSP-1	DSP Unit				•
FVS-1A	Voice Synthesizer Unit				•
DVS-4	Digital Voice Recorder Unit				•
CSC-72	Soft Case			•	
CSC-76	Soft Case	•	•		
CNB401	Ni-Cd Battery Pack		•	•	
FNB-79	Ni-Cd Battery Pack	•			
NC-60A	AC Adapter (117/234 V)			•	
NC-82	Charger Stand with CA-34	•			
CA-34	Charger Sleeve with NC-82	•			
CSA401	AC Adapter		•		
PA-30B/C/U*	AC Adapter	•			
CT-35	Cloning Cable	•	•	•	
E-DC-5B	DC Cable with Cigar-Lighter Plug	•		•	
E-DC-15	DC Cable with Cigar-Lighter Plug	•			
E-DC-6	DC Cable			•	



*B to 120 VAC/ C for 240 VAC/ U for 230 VAC.

Yaesu Rotators are precision-designed for a wide variety of antenna installation applications. Smooth and quiet in operation, these rotators are housed in weatherproof, die-cast aluminum enclosures and permanently lubricated for years of maintenance-free operation. Yaesu Rotators are compatible with most U.S.-made antenna tower accessory shelves.



G-2800DXA G-2800DXC

The new top-of-the-line rotator for extra heavy-duty antenna installations. Total rotation range 450 degrees, with presets.



G-1000DXA G-1000DXC G-800DXA

High-performance rotator with presets for medium and heavy-duty applications. Total rotation range 450 degrees.



G-800SA

High-performance rotator with presets for medium and heavy-duty applications. Total rotation range 450 degrees. DC 13.8 V Type.



G-650A

G-650C

European and Asian versions



G-450A

G-450C

New entry-level rotator for light to medium-duty installations. Total rotation range 360 degrees.



G-5500

Azimuth-Elevation combination for space communication antennas. DIN connection provided for computer operation. Maximum antenna wind load, 11 sq. ft.



G-550

Elevation rotator for space communication antennas. Maximum antenna wind load, 12 sq. ft.



G-250

The G-250 is designed to support and rotate medium-size FM radio and antenna arrays under remote control from your living room.

*Wind load ratings are valid when rotator is mounted in tower. Please refer to Yaesu's "Rotators" brochure for complete wind load specification. *On models with "DXC" or "C" suffix, control cable is included.

Model	Application	Mast Size	Rotator Size	Pre-sets	Wind Load
G-2800DXA	Extra Heavy-duty	1 7/8-2 1/2 inches	13 5/8" H x 8" Dia	Yes	34 Sq. Ft.
G-1000DXA	Heavy-duty	1 1/2-2 1/2 inches	12 1/2" H x 7 1/2" Dia.	Yes	23 Sq. Ft.
G-800DXA G-800SA	Medium-duty	1 1/2-2 1/2 inches	12 1/2" H x 7 1/2" Dia.	Yes	17 Sq. Ft.
G-450A	Light/medium-duty	1 3/4-2 inches	12 1/2" H x 7 1/2" Dia.	No	10 Sq. Ft.
G-650A G-650C	Light/medium-duty	1 3/4-2 inches	12 1/2" H x 7 1/2" Dia.	No	10 Sq. Ft.
G-250	Light-duty	1-1 1/2 inches	5 3/5" H x 12 2/5" Dia.	No	2 Sq. Ft.
G-5500	Azimuth-Elevation Rotator combination	1 1/2-2 1/2 inches (Boom Dia. 1 1/4-1 5/8 in.)	Mounted together 12 1/2" H x 7 1/2" Dia.	No	11 Sq. Ft.
G-550	Elevation only	1 1/2-2 1/2 inches (Boom Dia. 1 1/4-1 5/8 in.)	10 1/2" H x 7 1/2" Dia.	No	12 Sq. Ft.

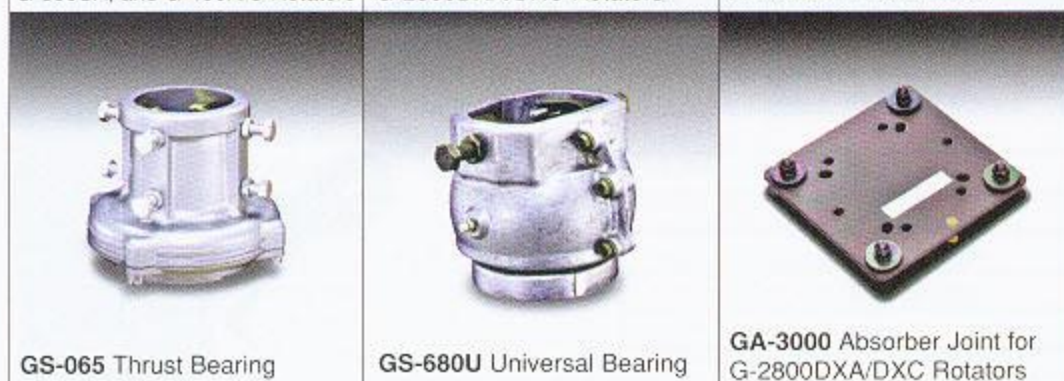
Optional Accessories



GC-038 Mast Clamp for G-1000DXA/DXC, G-800DXA, G-800SA, and G-450A/C Rotators

GC-048 Mast Clamp for G-2800DXA/DXC Rotators

GS-050 Thrust Bearing



GS-065 Thrust Bearing

GS-680U Universal Bearing

GA-3000 Absorber Joint for G-2800DXA/DXC Rotators



GA-2500 Absorber Joint for G-1000DXA/DXC, G-800DXA, G-800SA, and G-450A/C Rotators

GS-232A Computer Controller for all DXA/DXC Series and G-5500 Rotators
C-1000 Control Cable for GS-232A (using DX Series Rotators)

GL-33 Mast Adjustment Plate

Specifications

Model	Receive Frequency Range	Transmit Frequency Range	Modes	TX Power Output	Sensitivity	Dimensions in Inches (in mm) W x H x D
MARK-V FT-1000MP	100 kHz-30 MHz	160-10 m Amateur Bands	USB,LSB,CW,FSK, AFSK,AM,FM	200 Watts (AM: 50 W) Adjustable Class A mode (SSB): 75 W(MAX)	SSB:0.16 μ V AM<2 μ V FM<0.5 μ V	16.4 x 5.3 x 13.7 (410 x 135 x 347)
MARK-V FT-1000MP Field	100 kHz-30 MHz	160-10 m Amateur Bands	USB,LSB,CW,FSK, AFSK,AM,FM	100 Watts (AM: 50 W) Adjustable Class A mode(SSB): 25 W(MAX)	SSB:0.16 μ V AM<2 μ V FM<0.5 μ V	16.4 x 5.3 x 13.7 (410 x 135 x 347)
FTV-1000 (Transverter)	50-54 MHz (Usable to below 45 MHz)	6 m Amateur Bands	USB, LSB, CW, FSK, AFSK, AM, FM	200 Watts (AM: 50 W) Adjustable	SSB:0.16 μ V AM<2 μ V FM<0.5 μ V	9.6 x 5.4 x 13 (243.5 x 136.5 x 331)
FT-1000D	100 kHz-30 MHz	160-10 m Amateur Bands	USB,LSB,CW,RTTY, PKT,AM,FM	200 Watts (AM: 50 W) Adjustable	SSB:0.25 μ V AM<1 μ V FM<0.5 μ V	16.8 x 6.0 x 15.0 (420 x 150 x 375)
FT-920	100 kHz-30 MHz 48 MHz-56 MHz	160-6 m Amateur Bands	USB,LSB,CW,FSK, AM, Optional FM	100 Watts (AM: 25 W) Adjustable	SSB:0.2 μ V AM<2 μ V FM<0.25 μ V	16.4 x 5.4 x 12.7 (410 x 135 x 316)
FT-840	100 kHz-30 MHz	160-10 m Amateur Bands	USB,LSB,CW,AM, Optional FM	100 Watts (AM: 25 W) Adjustable	SSB:0.25 μ V AM<1 μ V FM<0.5 μ V	9.5 x 3.7 x 9.7 (238 x 93 x 243)
FT-600	50 kHz-30 MHz	160-10 m Amateur Bands	USB,LSB,CW, AM,AFSK	100 Watts (AM: 25 W) Adjustable	SSB:0.25 μ V AM<1 μ V	9.7 x 4.2 x 11.5 (244 x 104 x 286)
FT-847	100 kHz-37 MHz 37-76 MHz 108-174 MHz 420-512 MHz	160-6 m 2 m 70 cm Amateur Bands	USB,LSB,CW,AM, FM,FSK,AFSK	160-6 m:100 Watts (AM: 25 W) 2 m/70 cm: 50 Watts (AM: 12.5 W) Adjustable	SSB:0.25 μ V**** (2 m/70 cm:0.125 μ V) AM<1 μ V**** FM<0.5 μ V**** (2 m/70 cm:0.16 μ V)	10.2 x 3.4 x 10.6 (260 x 86 x 270)
FT-100D	100 kHz-30 MHz 30-970 MHz*	160-6 m 2 m 70 cm Amateur Bands	USB,LSB,CW,AM, FM,PKT,AFSK	160-6 m: 100 Watts 2 m: 50 Watts 70 cm: 20 Watts	SSB HF:0.25 μ V 6m:0.2 μ V 2 m/70 cm:0.125 μ V AM HF:2 μ V V/UHF:1 μ V FM 10 m:0.5 μ V 6 m:0.25 μ V 2 m/70 cm:0.2 μ V	6.3 x 2.1 x 8.0 (160 x 54 x 203)
FT-817	100 kHz-30 MHz 50-54 MHz 76-108 MHz (W-FM) 108-154 MHz (USA)	160-6 m 2 m 70 cm Amateur Bands	USB, LSB, CW, AM FM, FM-W, PKT, AFSK	5 Watts (AM: 1.5 W) (@ 13.8 V)	0.25 μ V typ. SSB/CW 2 μ V AM 1.8 - 54 MHz 0.2 μ V FM 144/430 MHz	5.31 x 1.5 x 6.5 (135 x 38 x 165)
FT-897	0.1-56 MHz 76-108 MHz 118-164 MHz 420-470 MHz	160-6 m 2 m 70 cm Amateur Bands	USB, LSB, CW, AM FM, FM-W, PKT, AFSK	100 W (HF/6m) (25 W AM) 50 W (2 m) (12.5 W AM) 20 W (70 cm) (5 W AM) Battery Power: 20 W	0.2 μ V SSB/CW typ. 2 μ V AM 1.8-54 MHz 0.16 μ V FM 2 m/70 cm	7.87 x 3.15 x 10.3 (200 x 80 x 262)
FT-8900R	28 - 29.7 MHz 50 - 54 MHz 108 - 180 MHz 320 - 480 MHz 700 - 999.99 MHz	10 m 6 m 2 m 70 cm Amateur Bands	FM, PKT 1200/9600 AM (RX)	10/2 m: 50 W 6 m/70 cm: 35 W	0.20 μ V (12 dB SINAD)	5.5 x 1.6 x 6.6 (140 x 41.5 x 168)
FT-7100M	108-137 MHz (AM) 137-180 MHz 320-480 MHz 810-999.99 MHz*	2 m 70 cm Amateur Bands	FM,PKT1200/9600, AM(RX)	2 m: 50/20/10/5 W 70 cm: 35/20/10/5 W	0.16 μ V (12 dB SINAD)	5.8 x 1.9 x 6.9 (140 x 38 x 166)
FT-90R	100-230 MHz 300-530 MHz 810-999.975 MHz*	2 m 70 cm Amateur Bands	FM	2 m: 50/20/10/5 W 70 cm: 35/20/10/5 W	0.16 μ V (12 dB SINAD)	3.9 x 1.2 x 5.4 (100 x 30 x 138)
FT-3000M	110-180 MHz 300-520 MHz 800-999 MHz*	2 m Amateur Bands	FM,PKT1200/9600, AM(RX)	2 m: 70/50/25/10 W	**<0.20 μ V(Main) 0.25 μ V(Sub) (12 dB SINAD)	5.5 x 1.6 x 7.1 (140 x 40 x 180)
FT-2600M	134-174 MHz	2 m Amateur Bands	FM	2 m: 60/25/10/5 W	0.2 μ V (12 dB SINAD)	6.3 x 1.6 x 6.3 (160 x 40 x 160)
FT-1500M	137-174 MHz	2 m Amateur Bands	FM,PKT1200/9600	2 m: 50/25/10/5 W	0.2 μ V (12 dB SINAD)	5.0 x 1.4 x 4.9 (127 x 35 x 126)
VX-7R	0.5-999 MHz*	6 m 2 m 222-225 MHz (USA) 70 cm Amateur Bands	FM, AM (AM TX: 50 MHz)	5 Watts (6 m AM: 1 W) (222 MHz: 300 mW)	0.5-30 MHz: 3 μ V (AM) 30-50 MHz: 0.5 μ V 0.16 μ V (50/144 MHz Amateur Bands) 0.18 μ V (400-470 MHz) 54-108 MHz: 1.0 μ V 150-540 MHz: 0.5 μ V or better	With FNB-80LI 2.4 x 3.5 x 1.1 (60 x 90 x 28.5)
VX-5R/VX-5RS	0.5-16 MHz 48-729 MHz 800-999 MHz*	6 m 2 m 70 cm Amateur Bands	FM, AM(RX)	5 Watts (13.8 V Ext DC In)	0.5-16 MHz: 0.5 μ V(10 dB SINAD) 76-108/174-222 MHz: 0.3 μ V(12 dB SINAD) 470-729 MHz(except 540-630 MHz): 3 μ V(12 dB SINAD) 6 m/2 m: 0.16 μ V(12 dB SINAD) 70 cm: 0.18 μ V(12 dB SINAD)	With FNB-58LI 2.3 x 3.4 x 1.1 (58 x 87 x 28)
VX-1R	0.5-1.7 MHz 76-999 MHz*	2 m 70 cm Amateur Bands	FM, AM(RX)	1 W (6 V Ext DC In)/ 500 mW (3.6 V DC)	2 m: 0.16 μ V 70 cm: 0.18 μ V (12 dB SINAD)	1.9 x 3.2 x 1.0 (47 x 81 x 25)
VX-150	140-174 MHz	2 m Amateur Bands	FM	5 Watts (w/FNB-64 Battery)	0.16 μ V (12 dB SINAD)	With FNB-64 2.3 x 4.3 x 1.0 (58 x 108.5 x 26.5)
VX-110	140-174 MHz	2 m Amateur Bands	FM	5 Watts (w/FNB-64 Battery)	0.16 μ V (12 dB SINAD)	With FNB-64 2.3 x 4.3 x 1.0 (58 x 108.5 x 26.5)

*800 MHz cellular blocked, not restorable. 824-849 MHz and 869-894 MHz reception not available. **0.55 μ V (902-928 MHz) ***0.3 μ V (902-928 MHz) ****6m:SSB 0.2 μ V, AM 0.5 μ V, FM 0.25 μ V
Specifications are subject to change, in the interest of technical improvement, without notice or obligation.

HF, HF+VHF/UHF Transceivers

MODEL		MARK-V FT-1000MP	MARK-V FT-1000MP Field	FT-1000D	FT-920	FT-840	FT-600	FT-847	FT-897	FT-100D	FT-817
MICROPHONE/SPEAKER/HEADPHONE											
MD-200A8X	Desk-Top Dynamic Microphone	•	•	•	•	•	•	•	•		
MD-100A8X	Desk-Top Microphone	•	•	•	•	•	•	•	•		
MH-31ES	Hand Microphone	•	•	•	•	•		•			
MH-36ESJS	DTMF Hand Microphone									•	
MH-36DS	DTMF Hand Microphone							•			
MH-36ESJ	DTMF Hand Microphone								•		•
SP-5	External Desk-Top Speaker w/Audio Filters			•							
SP-6	External Desk-Top Speaker w/Audio Filters					•	•			•	
SP-8	External Speaker w/Audio Filters	•	•		•	•	•				
MLS-100	High-Power External Speaker					•	•			•	
YH-77STA	Open - Air Stereo Headphones	•	•	•	•	•	•	•	•		
FILTER											
YF-114CN	8.2 MHz CW 250 Hz XTAL Filter - 2nd IF (Main Rcvr)	•	•								
YF-114SN	8.2 MHz SSB 2.0 kHz XTAL Filter - 2nd IF (Main Rcvr)	•	•								
YF-110C	455 kHz CW 500 Hz XTAL Filter (Built-in FT-100D)			•							
YF-110CN	455 kHz CW 250 Hz XTAL Filter - 3rd IF (Main Rcvr)	•	•	•							
YF-110SN	455 kHz SSB 2.0 kHz XTAL Filter - 3rd IF (Main Rcvr)	•	•	•							
YF-112A	6 kHz AM XTAL Filter					•	•				
YF-112C	455 kHz CW 500 Hz XTAL Filter					•	•				
YF-115C	500 Hz Collins® Mechanical CW Filter	•	•					•			
YF-115S-02	2.5 kHz Collins® Mechanical SSB Filter	•	•					•			
YF-122S	Collins SSB Filter (2.3 kHz/4.7 kHz: -6 dB/-60 dB)								•		•*2
YF-116A	AM 6.0 kHz XTAL Filter				•						
YF-116C	CW 500 Hz XTAL Filter				•						
XF-117A	11.705 MHz AM 6 kHz XTAL Filter									•	
XF-117CN	11.705 MHz CW 300 Hz XTAL Narrow Filter									•*2	
YF-122C	Collins CW Filter (500 Hz/2 kHz: -6 dB/-60 dB)								•		•*2
XF-455MC	455 kHz CW 600 Hz XTAL Filter (2nd IF Sub Rcvr)			•							
TCXO											
TCXO-1	Temperature Compensated XTAL Osc. ± 0.5 ppm			•							
TCXO-4	Temperature Compensated XTAL Osc. ± 2.0 ppm					•	•				
TCXO-6	Temperature Compensated XTAL Osc. ± 0.5 ppm	•	•								
TCXO-7	Temperature Compensated XTAL Osc. ± 2.0 ppm				•						
TCXO-9	TCXO Unit (±0.5 ppm)								•		•
ANTENNA TUNER											
ATAS-120	High Speed Active-Tuning Antenna System							•	•	•	
ATAS-100	Active-Tuning Antenna System							•	•	•	
ATBK-100	VHF/UHF Antenna Base Kit for ATAS-100, ATAS-120							•	•	•	
FC-10	Compact External Automatic Antenna Tuner (FT-840)					•	•				
FC-20	Automatic Antenna Tuner							•		•	
FC-30	External Automatic Antenna Tuner								•		
FC-800	External Automatic Antenna Tuner					•	•				
OTHERS											
FTV-1000	50 MHz 200 W Transverter	•	•*3								
BPF-1	Dual BPF for Cross Band Service (Built-in FT-1000D)			•							
CT-39	Packet Cable								•		•
CT-58	Packet Cable								•		
CT-62	CAT Interface Cable								•		•
CSC-83	Soft Case										•
DVS-2	Digital Voice Recorder	•	•	•							
FH-1	Remote Control Keypad	•	•								
FM-1	FM Unit				•						
FM-747	FM Module					•	•				
FNB-72	Ni-Cd Battery Pack (9.6 V, 1000 mAh)										•
FNB-78	Ni-MH Battery Pack (13.2 VDC, 4500 mAh)								•		
FP-1030A	30 Amp Linear Power Supply				•	•	•	•		•	
FP-1023	Compact Power Supply (U.S.A. only)				•	•	•	•		•	
FP-30	Docking AC Power Supply								•		
FTS-27	CTCSS Decode Unit (Built-in FT-100D)									•	
FVS-1A	Voice Synthesizer Unit							•			
LL-5	Phone Patch Module Unit (SP-5/6 Speakers only)			•						•	
LL-7	Phone Patch Module Unit (SP-8 Speaker Only)	•	•								
MMB-62	Remote Front Panel Mounting Bracket									•	
MMB-66	Mobile Mounting Bracket							•			
MMB-67	Quick Release Mobile Mounting Bracket									•	
NC-72B/C/U*1	Ni-Cd Battery Charger										•
PA-26B/C/U*1	Ni-MH Battery Charger for FNB-78								•		
YSK-100	Remote Mounting Kit									•	

*1 B for 120 VAC/C for 240 VAC/U for 230 VAC. *2 One of these two filters may be installed *3 Required FP-29 and FRB-5

HF MISCELLANEOUS

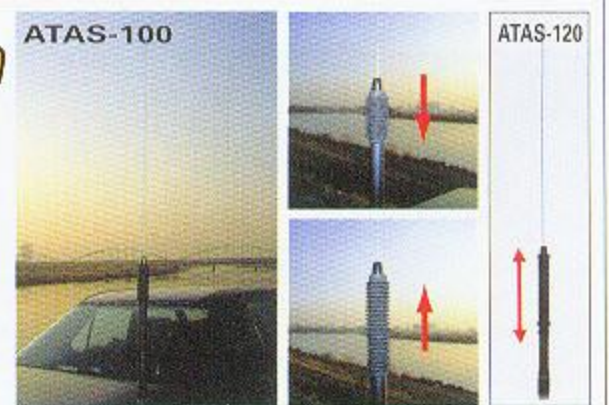
- YA-007FG Mobile Fiberglass HF Whip Antenna (1.6-30 MHz)-150 W P.E.P. (Required FC-800)
- YA-30 Dipole Broadband HF Antenna (1.6-30 MHz-150 W P.E.P.)
- YS-60 1.8-60 MHz 20/200/2000 W HF SWR Wattmeter
- YS-500 144-525 MHz SWR Wattmeter



ATAS-100 *PowerGain* ATAS-120

High Speed Active-Tuning Antenna System

Yaesu's patented ATAS (Active-Tuning Antenna System) provides HF/VHF/UHF coverage with automatic motorized tuning. Utilizing control signals from the transceiver's microprocessor received via the coaxial cable, the ATAS internal motor adjusts the radiator length for best SWR. The ATAS covers the 7/14/21/28/50/144/430 MHz bands, and is compatible with the FT-100D, FT-100, FT-847, and FT-897.



VHF/UHF Mobile Transceivers

MODEL		FT-8900R	FT-7100M	FT-90R	FT-3000M	FT-2600M	FT-1500M
MICROPHONE/SPEAKER							
MH-36 _{AEJ}	DTMF Microphone (Supplied in U.S. Model)			•	•		
MH-36 _{BEJ}	DTMF Microphone (Supplied in U.S. Model)					•	
MH-42 _{AEJ}	Condenser Microphone			•	•		
MH-42 _{BEJ}	Condenser Microphone					•	
MH-42 _{BEJS}	Hand Microphone with 1750 Hz Burst Button (supplied w/European and Asian versions)	•	•				
MH-48 _{AEJ}	DTMF Microphone (Supplied in U.S.A version)	•	•				
MH-48 _{BEJ}	DTMF Microphone (Supplied in U.S.A version)						•
MLS-100	High-Power External Speaker	•	•	•	•	•	•
BRACKET							
MMB-60	Quick-Release Mobile Bracket		•		•		
CABLE							
YSK-8900	Separation Kit	•					
YSK-7100	Separation Kit		•				
YSK-90	Separation Kit			•			
	Kit includes:CT-63L Control Cable (6m) / CT-24L Mic Extension Cable (6m) / CT-6L Speaker Extension Cable (6m) /MC-6 Mic Extension Kit / Panel Bracket						
CT-39A	Packet Interface Cable	•	•				
OTHERS							
ADMS-2D	Windows™ PC Programming Software				•		
ADMS-2E	Windows™ PC Programming Software			•		•	
ADMS-2F	Windows™ PC Programming Software						•
ADMS-2G	Windows™ PC Programming Software		•				
DVS-4	Digital Voice Recording Module				•		
FTS-17A	CTCSS Decode Unit				•		
MEK-2	Mic Extension Kit (For use with Yaesu 8-pin Microphones)	•	•	•			



MLS-100

MOBILES MISCELLANEOUS



FP-1023 Compact Power Supply (U.S.A. only)



MH-34B4B



VC-25



MH-37A4B

VHF/UHF Handheld Transceivers

MODEL		VX-7R	VX-5R/RS	VX-1R	FT-50R	VX-150/VX-110
ADMS-1E	Windows™ PC Programming Software	•	•	•	•	
ADMS-1F	Windows™ PC Programming Software				•	•
CSC-68	Soft Vinyl Case (FNB-41 or FBA-15)				•	
CSC-69	Soft Vinyl Case (FNB-40)				•	
CSC-73	Soft Vinyl Case		•			
CSC-88	Soft Vinyl Case	•				
MH-34 _{B4B}	Compact Speaker / Microphone		•	•	•	•
MH-37 _{A4B}	Compact Lapel Mic with Earpiece		•	•	•	•
MH-57 _{A4B}	Compact Speaker / Microphone	•				
CMP460A	Waterproof Speaker / Microphone	•				
VC-25	Lightweight VOX (Voice-Operated) Headset		•	•	•	•
VC-27	Earpiece / Microphone (VOX-Operated)	•				
CT-27	Radio to Radio Cloning Cable		•		•	•
CT-30	Microphone Adapter (2 pin to 1 pin)				•	
CT-91	Microphone Adapter	•				
CT-44	For packet interface or use with earlier Yaesu microphones		•	•		•
SU-1	Barometric Pressure Sensor	•	•			
CN-3	Adapter for use with BNC Connector	•	•	•	•	•
E-DC-15	DC Cable with Voltage Regulator and Cigarette-lighter Plug			•		
E-DC-5B	DC Adapter w/Noise Filter	•	•		•	•
E-DC-6	DC Cable, Plug and Wire Only	•			•	•
FBA-15	4 AA Size Battery Case (2.5 Watt)				•	
FBA-20	Case for AA Alkaline Battery; includes Voltage Regulator			•		
FBA-23	Holds two AA Alkaline cells	•	•			
FBA-25	6 AA Size Battery Case					•
FNB-40	Ni-Cd 6.0V, 650 mAh Battery - Slim Type (2.5 Watt)				•	
FNB-41	Ni-Cd 9.6V, 600 mAh Battery (5 Watt)				•	
FNB-42	Ni-Cd 9.6V, 1100 mAh Battery (5 Watt)				•	
FNB-52LI	Extra Lithium-Ion Battery, 3.6 V @ 700 mAh			•		
FNB-64	Ni-Cd 7.2 V, 700 mAh Battery (5 Watt)					•
FNB-V57	Ni-Cd 7.2 V, 1100 mAh Battery (5 Watt)					•
FNB-80LI	Lithium-ion Battery Pack, 7.4 V @ 1300 mAh	•				
FTT-12	16 Key DTMF Keypad w/CTCSS Enc/Dec, Direct Key Entry, 99 Memories, and DVRS*				•	
CA-14	Charger Adapter - Set of 2 (for use with NC-50)				•	
CA-15	Charger Adapter for NC-60B/C				•	
CA-24	Charger Sleeve					•
CD-15	Rapid Charger (2.5 hours)		•			
CD-15A	Rapid Charger (2.5 hours)	•				
CD-16	Desktop Rapid Charger (requires CA-24 and PA-23)					•
NC-50	Dual Sequential "Rapid Charger"(Required CA-14 Charger Adapter)				•	
NC-60B/C/U*	Wall Charger (FNB-40/41)				•	
NC-66	Wall Charger (FNB-52LI)			•		
NC-72B/C/F/U*	Wall Charger (FNB-64)	•	•			•
NC-73	Desktop Rapid Charger					•
PA-17	Battery Cable Extender				•	
PA-23	AC Adapter					•
RH-1	Grip™ RTM Rubber Case Protector (Black)				•	
RH-1(R)	Grip™ RTM Rubber Case Protector (Orange)				•	
YHA-62	Rubber flex antenna					•

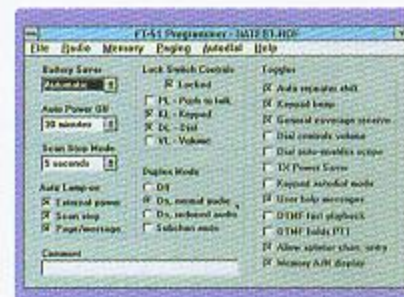
* B for 120 VAC/C for 240 VAC/F for 220 VAC/U for 230 VAC.

ADMS Series Windows™ Programming Software Kit



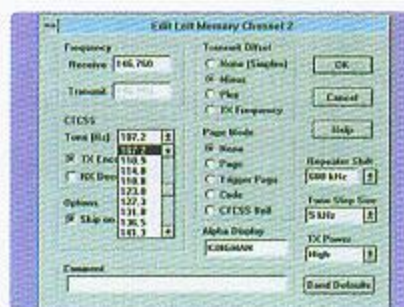
ADMS-1 Windows™ Programming Software

Program all the features for the Mobile and Handheld Transceiver with ADMS Windows™ Programming Software. Just "point and click," and easy programming of these Transceiver is yours. Use ADMS to download frequency data from Transceiver to computer, then clone the information to another same Transceiver instantly! Create memory files for cities you visit, then load and go! Affordable for everyone, ADMS Windows™ Programming Software is a useful package which will simplify Transceiver programming.



Main Window

Use the Main Window to customize your handheld the way you like it. For example, the Auto Repeater Shift and Keypad Beep tone can be selected "on" or "off." When you are scanning, the display lamp can be programmed to light up when a Busy Channel is found.



Memory Channel Edit Window

Each Memory Channel has a detailed window. With a simple click of the mouse, you can program the following for each memory: Frequency, Alpha Name, Repeater Offset, CTCSS, Power Level, Channel Step Size. And more!



About this brochure: We have made this brochure as comprehensive and factual as possible. We reserve the right, however, to make changes at any time in equipment, optional accessories, specifications, model numbers, and availability. Precise frequency range may be different in some countries. Some accessories shown herein may not be available in some countries. Some information may have been updated since the time of printing; please check with your Authorized Yaesu Dealer for complete details.



VERTEX STANDARD CO., LTD.

4-8-8 Nakameguro, Meguro-ku, Tokyo 153-8644, Japan

For the latest Yaesu news, visit us on the Internet:
<http://www.vxstdusa.com> <http://www.yaesu.co.uk>

DR. ELECTRONICS
ΑΡΓΥΡΟΠΟΥΛΟΙ Δ. & Χ. ΑΦΟΙ Ο.Ε.
ΕΠΙΣΚΕΥΕΣ - ΕΙΣΑΓΩΓΕΣ & ΕΜΠΟΡΙΑ
ΗΛΕΚΤΡΟΝΙΚΩΝ & ΑΝΤ/ΚΩΝ ΗΛ/ΚΩΝ
ΒΑΘΕΟΣ 17 - ΑΘΗΝΑ 115 22
ΑΦΜ. 084218607 - ΔΟΥ: ΚΑ' ΑΘΗΝΩΝ
ΤΗΛ. 6400 100 - FAX: 6451791

VERTEX STANDARD

Phone 714/827-7600; Fax 714/827-8100
Email: amateursales@vxstdusa.com

US Headquarters

10900 Walker Street, Cypress, CA 90630, U.S.A.

International Division

8350 N.W. 52nd Terrace, Suite 201, Miami, FL 33166, U.S.A.

YAESU EUROPE B.V.

P.O. Box 75525, 1118 ZN Schiphol, The Netherlands

YAESU UK LTD.

Email: sales@yaesu.co.uk

Unit 12, Sun Valley Business Park, Winnall Close
Winchester, Hampshire, SO23 0LB, U.K.

VERTEX STANDARD HK LTD.

Unit 5, 20/F., Seaview Centre, 139-141 Hoi Bun Road,
Kwun Tong, Kowloon, Hong Kong